



11261 Plant Road

Mermentau, Louisiana 70556

Property Highlights

- ±70 acres available in Mermentau, Louisiana
- Frontage on the Mermentau River
- Agriculture/Rural Zoning
- Flood Zones AE & X
- Final acreage to be determined by survey

Sale Price

\$7,500 / acre



For more information

Matt Redd, CCIM, SIOR, CRE

O: 337 310 0605 | C: 337 489 9666
mattredd@reddproperties.com

CALL OR EMAIL FOR MORE INFORMATION

NO WARRANTY OR REPRESENTATION, EXPRESS OR IMPLIED, IS MADE AS TO THE ACCURACY OF THE INFORMATION CONTAINED HEREIN, AND THE SAME IS SUBMITTED SUBJECT TO ERRORS, OMISSIONS, CHANGE OF PRICE, RENTAL OR OTHER CONDITIONS, PRIOR SALE, LEASE OR FINANCING, OR WITHDRAWAL WITHOUT NOTICE, AND OF ANY SPECIAL LISTING CONDITIONS IMPOSED BY OUR PRINCIPALS NO WARRANTIES OR REPRESENTATIONS ARE MADE AS TO THE CONDITION OF THE PROPERTY OR ANY HAZARDS CONTAINED THEREIN ARE ANY TO BE IMPLIED. LICENSED IN LOUISIANA.

810 W Bayou Pines Drive
Lake Charles, LA 70601
337 310 7333 tel
latterblum.com

August 27, 2021

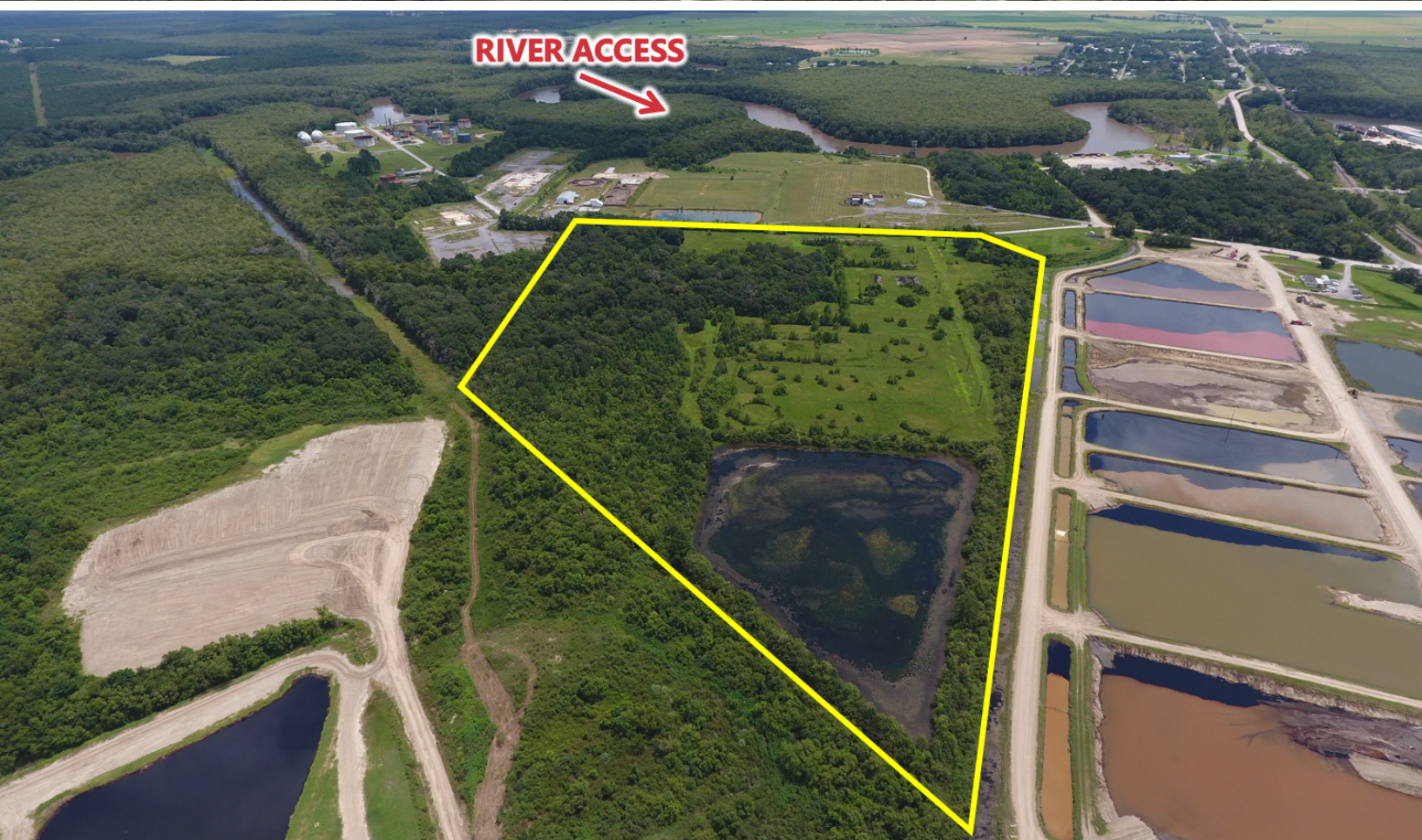
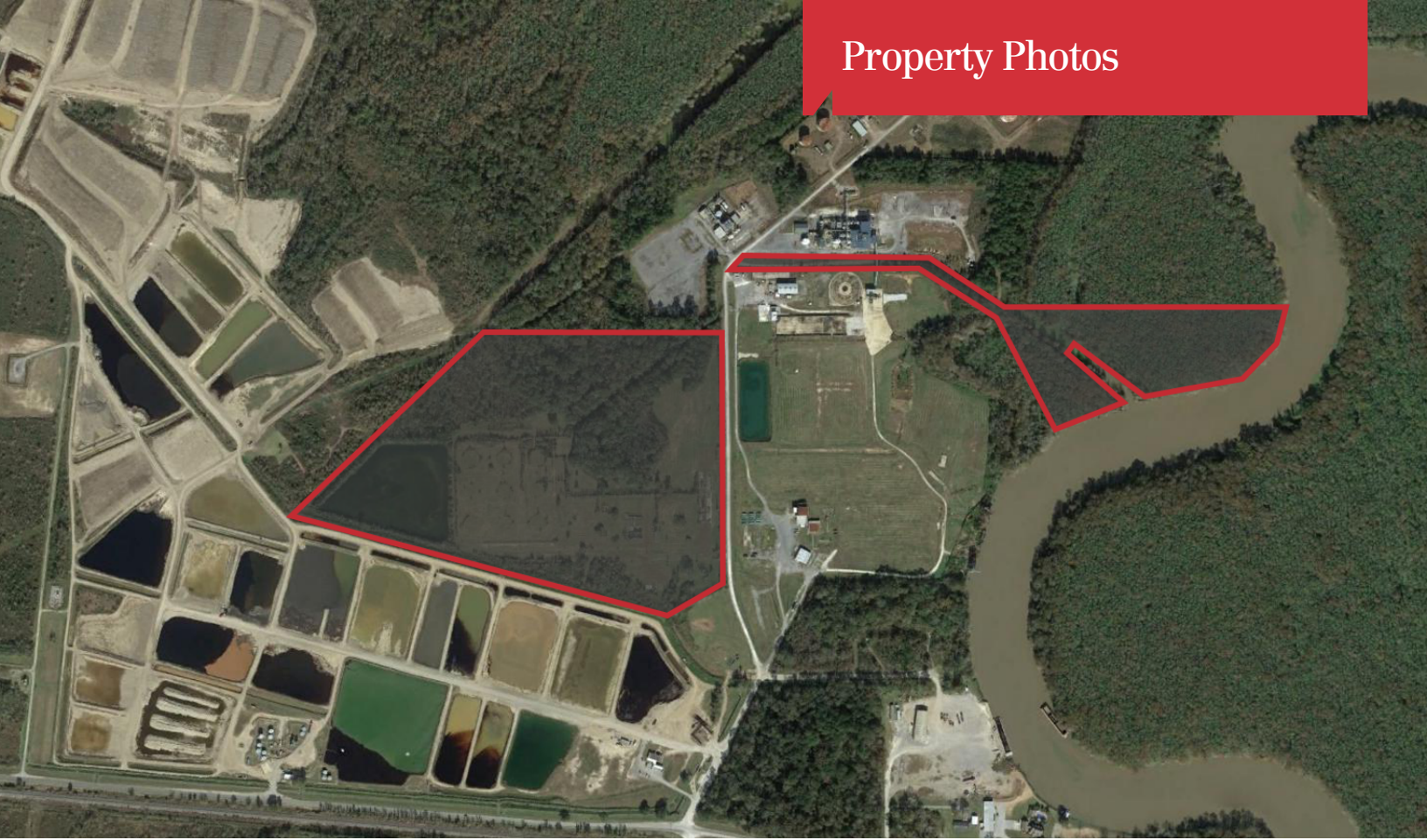


±50 ACRE PARCEL LOCATED ON PLANT ROAD



±20 ACRE PARCEL ON THE MERMENTAU RIVER

Property Photos



Property Location

